



**SNOOTY C**  
made a great big scene:  
he huffed, “I want a throne.”

*Those lines weren't enough  
for C, and so he drew his own.*





**FRIENDLY D** bounced up to C. D asked him "Will you share?"  
But Snooty C told Friendly D, "It's *my* line fair and square."





So, up past C went Friendly D to the space below the staff.  
D held on tight with all his might, but looked below and gasped!

# MEET SNOOTY C

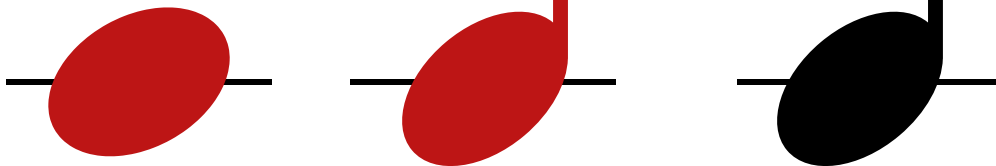
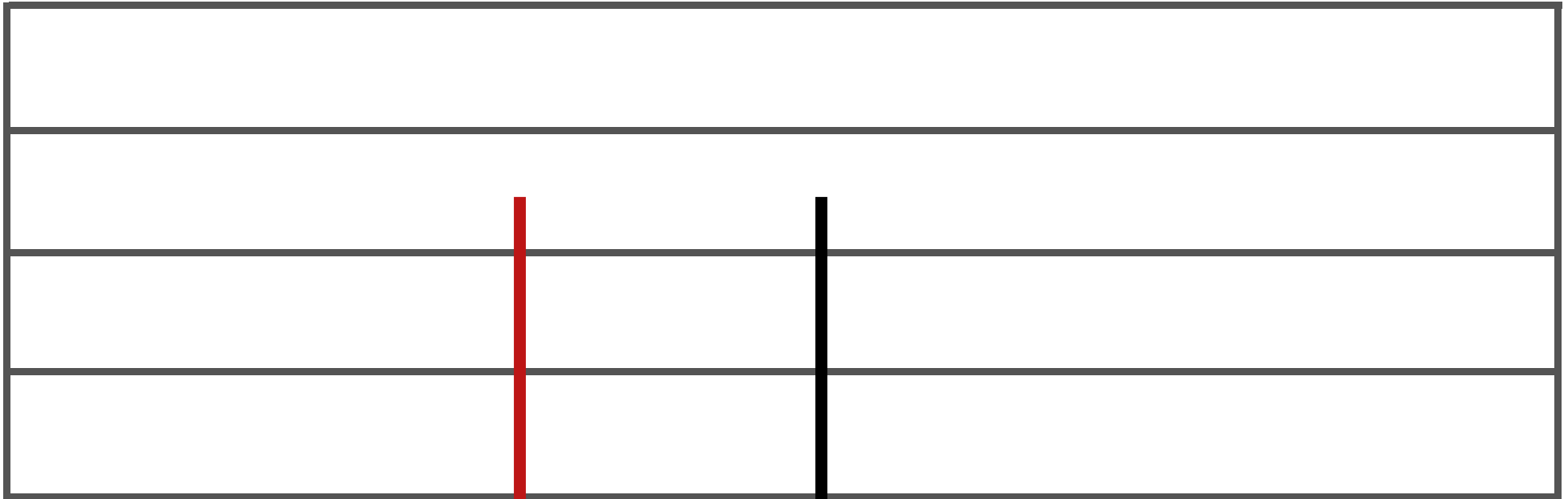
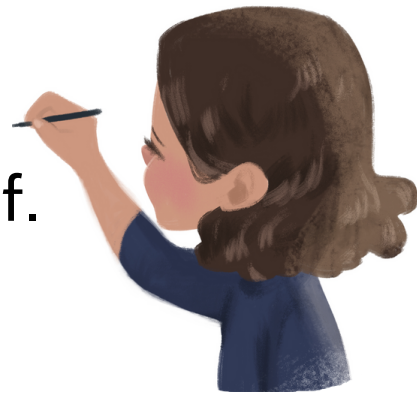
He's so stuck up, he had to make his very own line below the staff.



We also call him Middle C because the sound he makes is in the middle of the piano.



On a music sheet, we find  
Snooty Middle C below the 5 treble  
lines on one extra little line all to itself.



MUSIC WORDS: C's extra  
line is called a *ledger line*

# MIDDLE C IN MUSIC

Draw the missing ledger lines.

The image shows two musical staves. The top staff has a treble clef on the left. It contains eight notes: a quarter note on the first line, a beamed eighth-note pair on the first line, a quarter note on the first line, a quarter note on the first line, a quarter note on the first line, a half note on the first line, a half note on the first line, and a whole note on the first line. The bottom staff also has a treble clef on the left. It contains eight notes: a half note on the first line, a quarter note on the first line, a quarter note on the first line, a beamed eighth-note pair on the first line, a beamed eighth-note pair on the first line, a quarter note on the first line, a quarter note on the first line, and a whole note on the first line. A dashed horizontal line is drawn across both staves at the level of the first line, representing the middle C pitch.